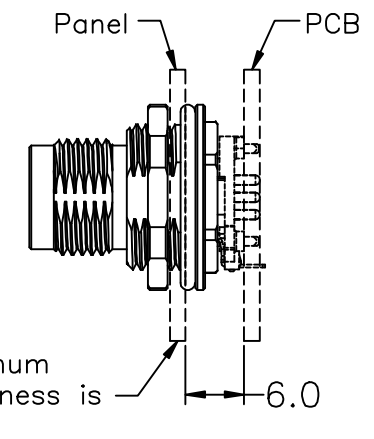
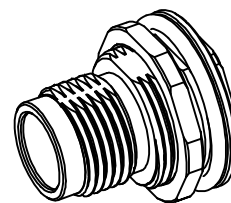
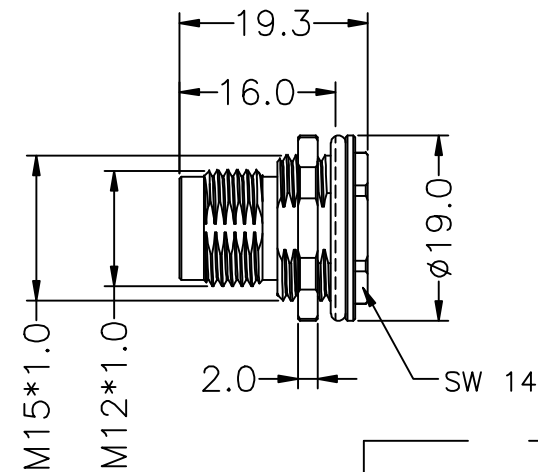
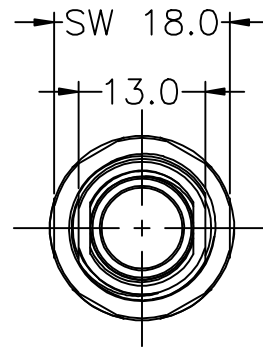
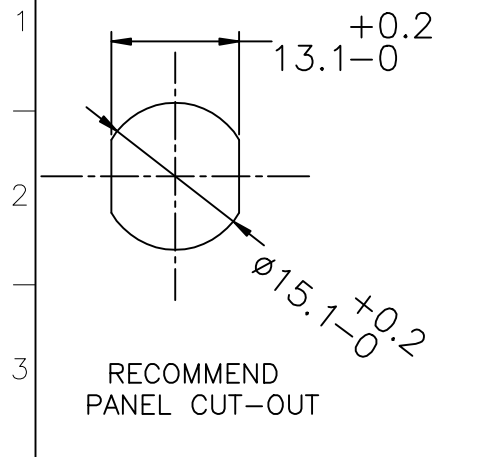


REV	DESCRIPTION	DATE	APPROVED
S0	CREATED DRAWING	2023/01/14	ZK




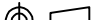
Detailed Product Description:
Waterproof connector rating is IP67
(After the connector is properly assembledPer)
ISO-20653,IEC60529

Mechanical characteristics: mating/cycle >100cycle
Operating temperature: -25°C ~ +85°C

Shell: Copper alloy with Nickel-plated

For M12 male panel connector(THR)

ALL MATERIALS ARE RoHS COMPLIANT

 SIGNAL®		TITLE M12 MALE PANEL METAL SHELL (FOR MALE THR CONNECTOR)		
Shenzhen Signal Electronics Co., LTD		SGN NO FWK00815	REV.	
DRAWN BY	DATE	DWG NO SGNYD2301024	S0	
CHECKED BY	DATE	CUSTOMER		
CHECKED BY	DATE			
APPROVED BY	DATE	TOLERANCES ARE:		
THE INFORMATION CONTAINED IN THIS DRAWING IS THE SOLE PROPERTY OF SIGNAL COMPANY. ANY REPRODUCTION IN PART OR WHOLE WITHOUT THE WRITTEN PERMISSION OF SIGNAL COMPANY IS PROHIBITED.		DECIMALES	THIRD ANGLE PROJECTION	
		ANGLES		
		.x ±0.5	SIZE: A4	UNITS: mm
		.xx ±0.20	SCALE:	SHEET: 1 OF 1
		.x' ±2.0°		
		.x' ±1.0°		