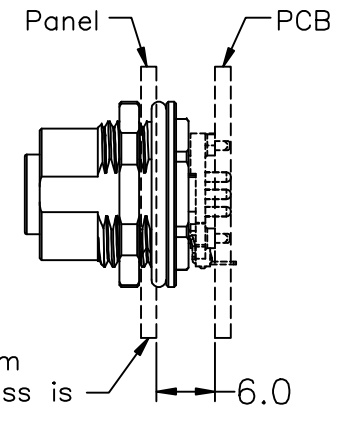
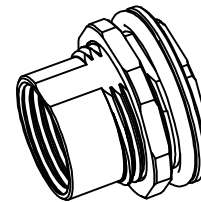
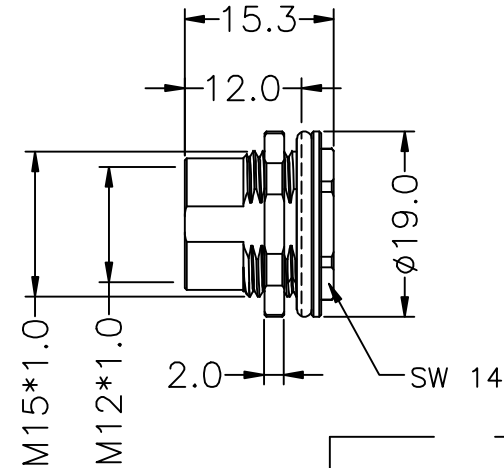
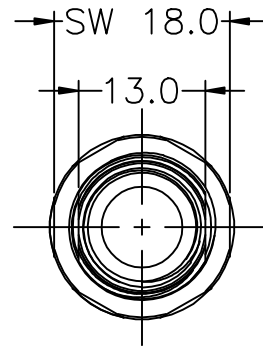
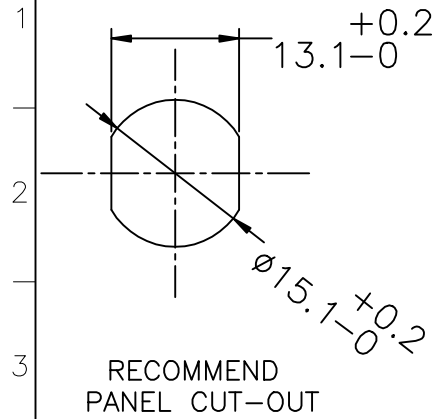


REV	DESCRIPTION	DATE	APPROVED
S0	CREATED DRAWING	2023/01/14	ZK




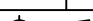
Detailed Product Description:  
Waterproof connector rating is IP67  
(After the connector is properly assembledPer)  
ISO-20653,IEC60529

Mechanical characteristics: mating/cycle >100cycle  
Operating temperature: -25°C ~ +85°C

Shell: Copper alloy with Nickel-plated

For M12 female panel connector(THR)

\*ALL MATERIALS ARE RoHS COMPLIANT\*

 <b>SIGNAL®</b>		TITLE M12 FEMALE PANEL METAL SHELL (FOR FEMALE THR CONNECTOR)	
Shenzhen Signal Electronics Co., LTD		SGN NO FWK00816	
DRAWN BY	DATE	DWG NO SGNYD2301024	REV.
CHECKED BY	DATE	CUSTOMER	S0
CHECKED BY	DATE		
APPROVED BY	DATE	TOLERANCES ARE:	
THE INFORMATION CONTAINED IN THIS DRAWING IS THE SOLE PROPERTY OF SIGNAL COMPANY. ANY REPRODUCTION IN PART OR WHOLE WITHOUT THE WRITTEN PERMISSION OF SIGNAL COMPANY IS PROHIBITED.		DECIMALES	ANGLES
		.x ±0.5	x.' ±2.0'
		.xx ±0.20	.x' ±1.0'
		THIRD ANGLE PROJECTION 	
		SIZE: A4	UNITS: mm
		SCALE:	SHEET: 1 OF 1