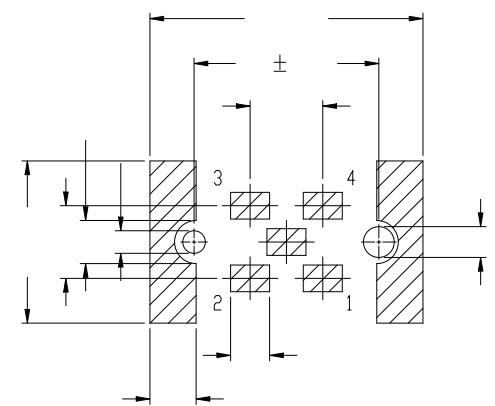
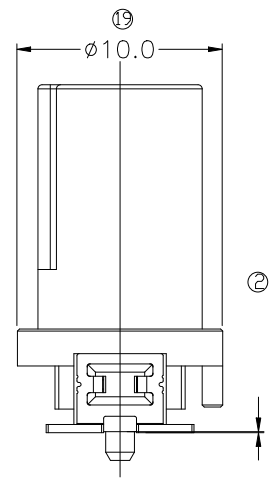
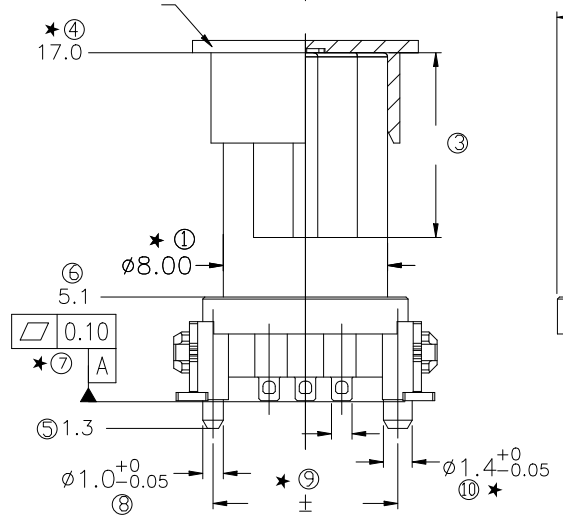
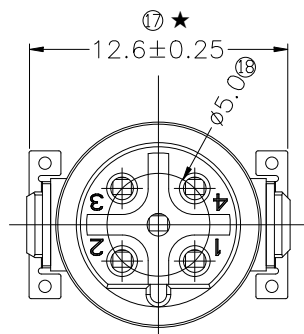
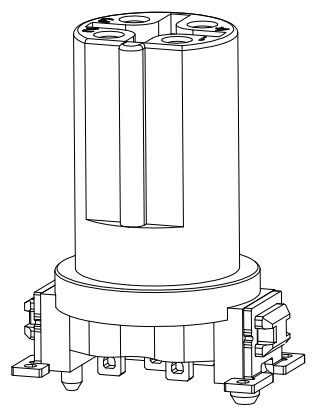
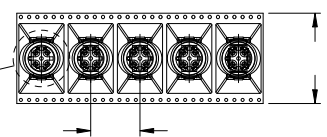
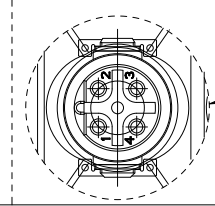
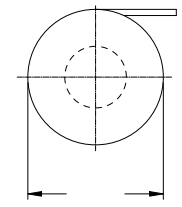


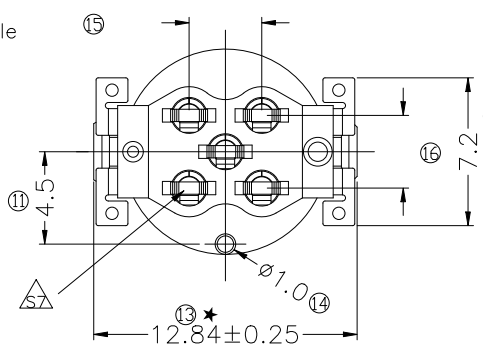
REV	DESCRIPTION	DATE	APPROVED
S6	UPDATE DIMENSIONING	2018/10/16	CRB
S7	UPDATE DRAWING	2018/12/8	CRB



RECOMMENDED PCB LAYOUT



TAPE AND REEL WITH CAP /100 PCS



Detailed Product Description
 Connector electrical characteristics:
 Rating voltage: 60V
 Insulation resistance: >100MΩ
 Rating current: 4A
 Contact resistance of connector ≤5mΩ
 Mechanical characteristics: mating / cycle >100 cycle
 Termination: SMT
 PINS: 5
 CODING: B
 Configuration: M12, female / stamped contacts
 The highest temperature: 265°C
 According to IEC61076-2-101
 Marked "★" for key inspection dimensions

*ALL MATERIALS ARE RoHS COMPLIANT.

SIGNAL [®] Shenzhen Signal Electronics Co., LTD		TITLE	
		M12 B 5P/F CONNECTCOR	
DRAWN BY		SGN NO	REV.
DATE		120205-04-015	
CHECKED BY		DWG NO	
DATE		CUSTOMER	S7
APPROVED BY		182-1207R	
DATE		TOLERANCES ARE:	THIRD ANGLE PROJECTION
THE INFORMATION CONTAINED IN THIS DRAWING IS THE SOLE PROPERTY OF SIGNAL COMPANY. ANY REPRODUCTION IN PART OR WHOLE WITHOUT THE WRITTEN PERMISSION OF SIGNAL COMPANY IS PROHIBITED.		DECIMALES	SIZE: A4
		.x ±0.15	UNITS: mm
		.xx ±0.10	SCALE:
		x.' ±1.0'	SHEET: 1 OF 1
		.x' ±0.5'	