



# TEST REPORT

No.: E190729004-02

Date: Aug. 12, 2019

Page 1 of 9

**Applicant** : Shenzhen Signal Electronics Co.,Ltd

**Address** : Building 15, Xia Lang Industrial Zone, He Shui Kou Community, Gongming, Guangming  
New District, Shenzhen, GD, China.

**The following sample information is supplied by the customers:**

**Sample Name** : See next page

**Model** : See next page

**Item/Lot No.** : /

**Material** : /

**Supplier** : /

**Manufacturer** : /

**Date of Receipt** : Jul. 29, 2019

**Date of Test** : Aug. 01, 2019 to Aug. 05, 2019

**Test Summary** :

No.	Test Item	Test Basis	Test Conclusion
1	IPX8	Refer to EN 60529-1991/A1:2000	Pass

Note: Pass: Meet requirement; Fail: Not meet requirement; N/A: Do not evaluate or provide test results only

\*\*\*\*\*FOR FURTHER DETAILS, PLEASE REFER TO THE FOLLOWING PAGE(S)\*\*\*\*\*

Signed for and on behalf of

Jiangsu 3E-TEST Technology Co., Ltd

Prepared by: \_\_\_\_\_  
Allen, Wang  
Project Engineer

Reviewed by: \_\_\_\_\_  
Kris, Tao  
Project Leader

Approved by: \_\_\_\_\_  
Irwin, Dong  
Technical Director







# TEST REPORT

No.: E190729004-02

Date: Aug. 12, 2019

Page 2 of 9

## 1. Sample Information:

Sample No.	Sample name	Model	Quantity
E19072900401	M5 Molding Line Series (male and female) +M5 Panel Series (male and female)	050004-03-002 050004-04-002 050004-05-001 050004-06-001	1 pc
E19072900402	M5 Welding Wire Forming Series (male and female)	050004-20-001 050004-21-001	1 pc
E19072900403	M9 Panel Type Series (male)	090005-03-001	1 pc
E19072900404	M9 Welding Wire Forming Series (male and female)	090005-20-001 090005-21-001	1 pc
E19072900405	M9 molding Line Series (male and female)	090005-05-001 090005-06-001	1 pc
E19072900406	M9 Panel Series (female)	090005-04-001	1 pc
E19072900407	M8 Distribution Box Series	920105-06-001	1 pc
E19072900408	M9 Series assembly type	090005-01-001 090005-02-001	1 pc
E19072900409	M12 Distribution Box Series	920105-08-023	1 pc

## 2. Test Equipment:

Equipment name	Type	No.	Calibration validity period
Pressure flooding tester	XB-OTS-IP38F	E/A-IP-04	2020.09.17

## 3. Environmental Condition:

Temperature: 23.7 °C; Relative Humidity: 52 %RH

## 4. Test Basis:

Refer to EN 60529-1991/A1:2000

## 5. Test Condition:

Test Item	Test Type	Test Conditions
IPX8	Tests for protection against water	Water-level on enclosure: 2 m above bottom Duration of test: 1 h

## 6. Initial measurements:

Before the test, the appearance of the sample is normal







# TEST REPORT

No.: E190729004-02

Date: Aug. 12, 2019

Page 3 of 9

## 7. Test Result:

Sample No.	Test Type	Test Result	Technical Requirement	Conclusion
E19072900401	Tests for protection against water	No ingress of water	Allow water has entered, it shall not be sufficient to interfere with the correct operation of the equipment or impair safety	Pass
E19072900402	Tests for protection against water	No ingress of water	Allow water has entered, it shall not be sufficient to interfere with the correct operation of the equipment or impair safety	Pass
E19072900403	Tests for protection against water	No ingress of water	Allow water has entered, it shall not be sufficient to interfere with the correct operation of the equipment or impair safety	Pass
E19072900404	Tests for protection against water	No ingress of water	Allow water has entered, it shall not be sufficient to interfere with the correct operation of the equipment or impair safety	Pass
E19072900405	Tests for protection against water	No ingress of water	Allow water has entered, it shall not be sufficient to interfere with the correct operation of the equipment or impair safety	Pass
E19072900406	Tests for protection against water	No ingress of water	Allow water has entered, it shall not be sufficient to interfere with the correct operation of the equipment or impair safety	Pass
E19072900407	Tests for protection against water	No ingress of water	Allow water has entered, it shall not be sufficient to interfere with the correct operation of the equipment or impair safety	Pass
E19072900408	Tests for protection against water	No ingress of water	Allow water has entered, it shall not be sufficient to	Pass







# TEST REPORT

No.: E190729004-02

Date: Aug. 12, 2019

Page 4 of 9

			interfere with the correct operation of the equipment or impair safety	
E19072900409	Tests for protection against water	No ingress of water	Allow water has entered, it shall not be sufficient to interfere with the correct operation of the equipment or impair safety	Pass

## 8. Test Photo:



Fig.1 Sample photo before the test(1#)

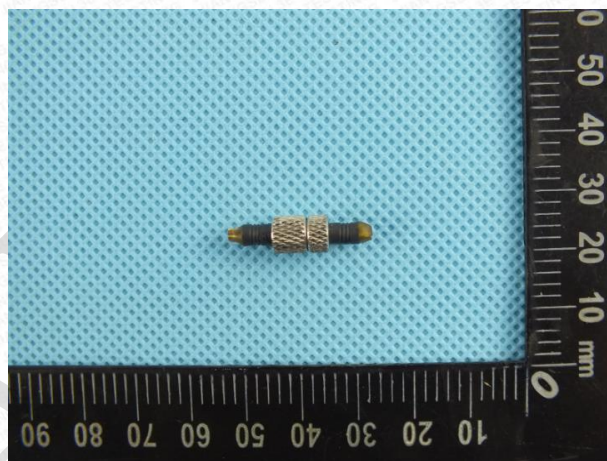


Fig.2 Sample photo before the test(2#)



Fig.3 Sample photo before the test(3#)



Fig.4 Sample photo before the test(4#)







# TEST REPORT

No.: E190729004-02

Date: Aug. 12, 2019

Page 5 of 9



Fig.5 Sample photo before the test(5#)

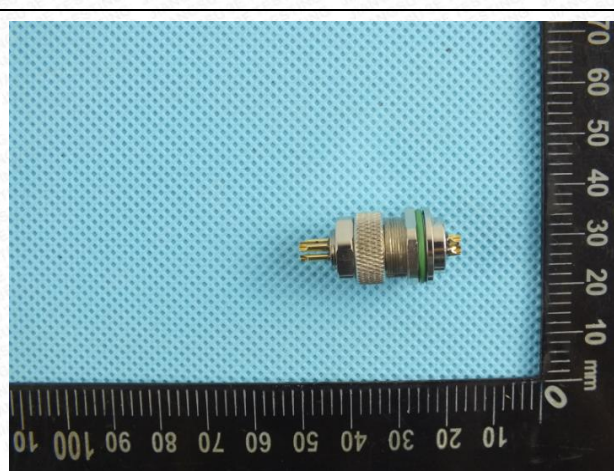


Fig.6 Sample photo before the test(6#)

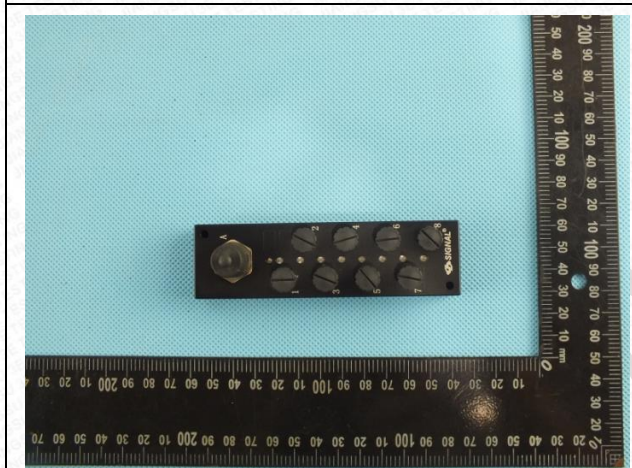


Fig.7 Sample photo before the test(7#)



Fig.8 Sample photo before the test(8#)

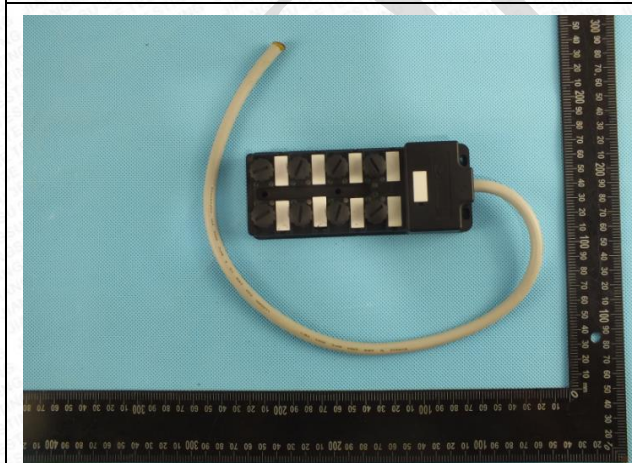


Fig.9 Sample photo before the test(9#)



Fig.10 IPX8 test







# TEST REPORT

No.: E190729004-02

Date: Aug. 12, 2019

Page 6 of 9



Fig.11 Sample photo after the test(1#)



Fig.12 Sample photo after the test(1#)



Fig.13 Sample photo after the test(2#)



Fig.14 Sample photo after the test(2#)



Fig.15 Sample photo after the test(3#)



Fig.16 Sample photo after the test(3#)







# TEST REPORT

No.: E190729004-02

Date: Aug. 12, 2019

Page 7 of 9



Fig.17 Sample photo after the test(4#)



Fig.18 Sample photo after the test(4#)



Fig.19 Sample photo after the test(5#)



Fig.20 Sample photo after the test(5#)



Fig.21 Sample photo after the test(6#)



Fig.22 Sample photo after the test(6#)







# TEST REPORT

No.: E190729004-02

Date: Aug. 12, 2019

Page 8 of 9



Fig.23 Sample photo after the test(7#)



Fig.24 Sample photo after the test(7#)



Fig.25 Sample photo after the test(8#)



Fig.26 Sample photo after the test(8#)



Fig.27 Sample photo after the test(9#)



Fig.28 Sample photo after the test(9#)

**\*\*End of Report\*\*\***







# TEST REPORT

No.: E190729004-02

Date: Aug. 12, 2019

Page 9 of 9

DRAFT

**Declaration:** This report is for the exclusive of 3E's Client and is provided pursuant to the agreement between 3E and its Client. This report is invalid when without signatures of authorized officer and special seal for testing and inspection. This report is only the Client is authorized to permit copying or distribution of this report and then only in its entirety. The source information of the sample in this report is supplied by the customer without any responsibility for the authenticity of its source information. This report is only to serve for the test results of the sample tested. This report template will be used after Dec. 01, 2018, and the old version is invalid. The final interpretation of this report is owned by Jiangsu 3E testing technology co., LTD.

