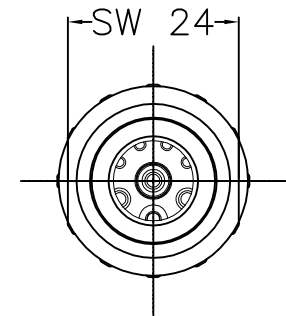
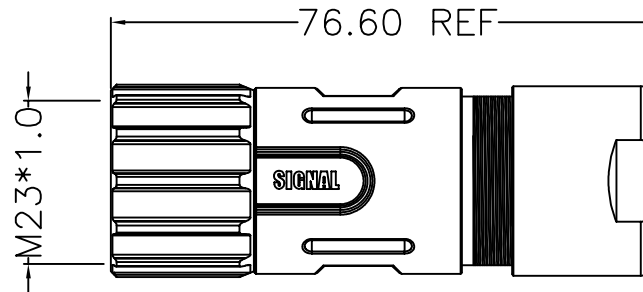
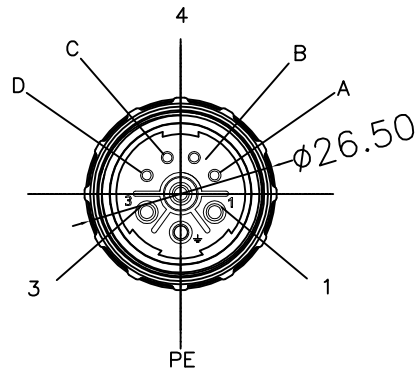


REV	DESCRIPTION	DATE	APPROVED
S0	CREATED DRAWING	2020/08/03	ZK



TERMINAL: CRIMP

#### Electrical character

Power: Rating voltage: 600V AC/DC  
Rating current: 28A

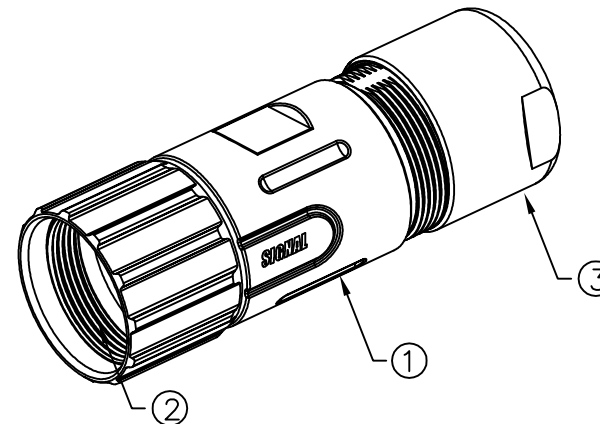
Data: Rating voltage: 300V AC/DC  
Rating current: 8A

Insulation resistance: >100MΩ  
Contact resistance: ≤5mΩ


#### Other Specification

Contact Pin: Phosphor bronze with gold-plated  
Insulation plastic: PA66  
Shell: kirsite  
Protection degree: IP69K  
Operating temperature: -40°C ~ +85°C

\*ALL MATERIALS ARE RoHS COMPLIANT.



③	N/A	M23 TAIL WATERPROOF PARTS	1	SET
②	N/A	M23 ASSEMBLY SHELL	1	SET
①	N/A	M23 FEMALE CONNECTOR	1	SET
ITEM	PART NO.	SPECIFICATION	Q'TY	UNIT

 Shenzhen Signal Electronics Co., LTD		TITLE M23 8PIN(4+3+PE) FEMALE ASSEMBLY CONNECTOR	
		SGN NO SGN YD2109027-4	REV. S0
DRAWN BY	DATE	DWG NO	CUSTOMER
CHECKED BY	DATE		
CHECKED BY	DATE		
APPROVED BY	DATE		
THE INFORMATION CONTAINED IN THIS DRAWING IS THE SOLE PROPERTY OF SIGNAL COMPANY. ANY REPRODUCTION IN PART OR WHOLE WITHOUT THE WRITTEN PERMISSION OF SIGNAL COMPANY IS PROHIBITED.		TOLERANCES ARE:	THIRD ANGLE PROJECTION
		DECIMALES .x ±0.5 .xx ±0.20	ANGLES x' ±2.0' .x' ±1.0'
		SIZE: A4	UNITS: mm
		SCALE:	SHEET: 1 OF 1