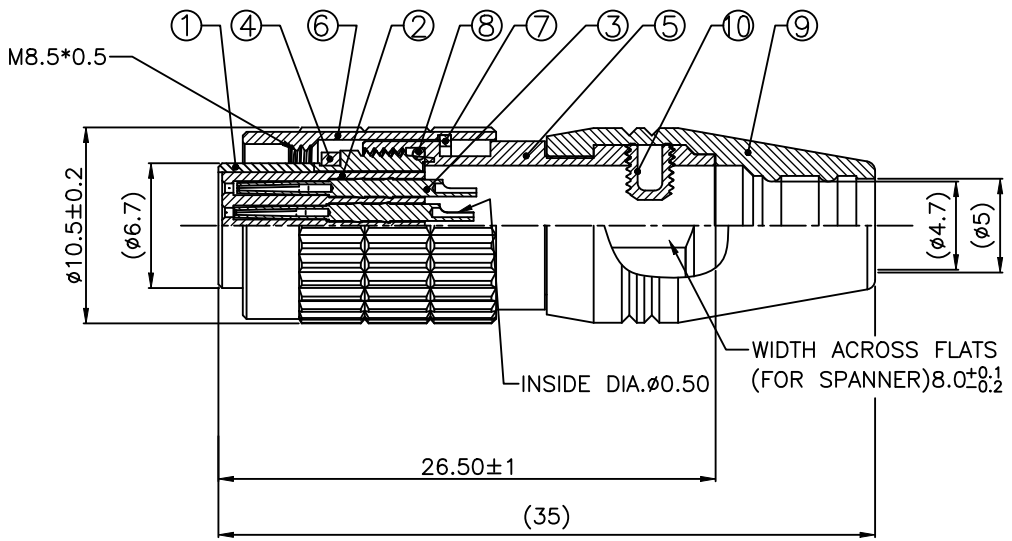
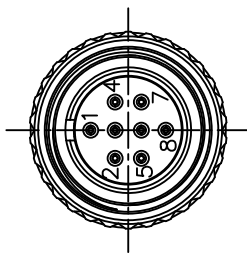
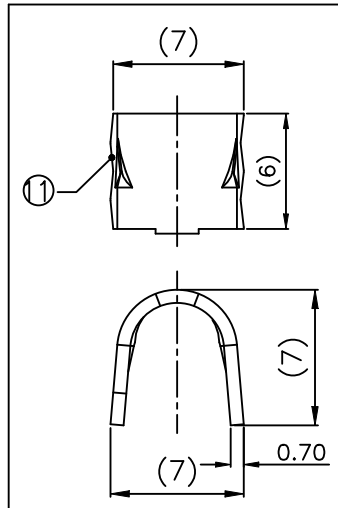


REV	DESCRIPTION	DATE	APPROVED
S0	CREATED DRAWING	2024/06/19	LY




Electrical character

Rated voltage	AC 30V/DC 42V
Rated current	1A
Mechanical characteristics (mating cycle)	>1000
Operating temperature (depending on cable quality)	-25°C ~ +85°C
Tightening torque (REF.)	1.0Nm (5)
ALL MATERIALS ARE RoHS COMPLIANT	



(11)	N/A	WIRE CLAMP BRASS	1	PCS
(10)	N/A	SCREW STEEL NICKEL PLATED	1	PCS
(9)	N/A	JACKET EPDM BLACK	1	PCS
(8)	N/A	O-RING EPDM BLACK	1	PCS
(7)	N/A	C-RING PHOSPHOR BRONZE NICKEL PLATED	1	PCS
(6)	N/A	SHELL M8.5*0.5 BRASS NICKEL PALTED	1	PCS
(5)	N/A	SHELL BRASS NICKEL PALTED	1	PCS
(4)	N/A	GASKET EPDM BLACK	1	PCS
(3)	N/A	TERMINAL PHOSPHOR BRONZE GOLD PLATED	8	PCS
(2)	N/A	INSULATOR PA66+GF BLACK	1	PCS
(1)	N/A	SHELL BRASS NICKEL PALTED	1	PCS
ITEM	PART NO.	SPECIFICATION	Q'TY	UNIT



Shenzhen Signal Electronics co.,Ltd

DRAWN BY	DATE
CHECKED BY	DATE
CHECKED BY	DATE
APPROVED BY	DATE

THE INFORMATION CONTAINED IN THIS DRAWING IS THE SOLE PROPERTY OF SIGNAL COMPANY. ANY REPRODUCTION IN PART OR WHOLE WITHOUT THE WRITTEN PERMISSION OF SIGNAL COMPANY IS PROHIBITED.

TITLE
8 P/F CONNECTOR (M8.5*0.5)

SGN NO	950108-02-001	REV.
DWG NO	SGNN2406028-1912	
CUSTOMER		S0

TOLERANCES ARE:		THIRD ANGLE PROJECTION	
DECIMALES	ANGLES	SIZE: A4	UNITS: mm
.x ±0.5	x.* ±2.0°	SCALE: 1:1	SHEET: 1 OF 1
.xx ±0.20	.x.* ±1.0°		