

REV	DESCRIPTION	DATE	APPROVED
S0	CREATED DRAWING	2024/12/04	CZP

Detailed Product Description:
 Waterproof connector rating is IP67/IP68
 They can not be used permanently under water.

Connector Electrical character

Rating voltage: 250V AC/DC ,

Insulation resistance: >100MΩ

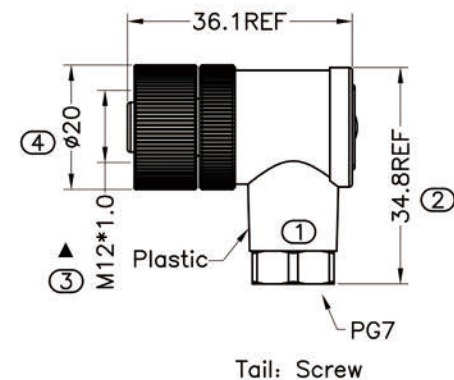
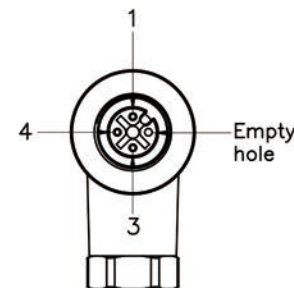
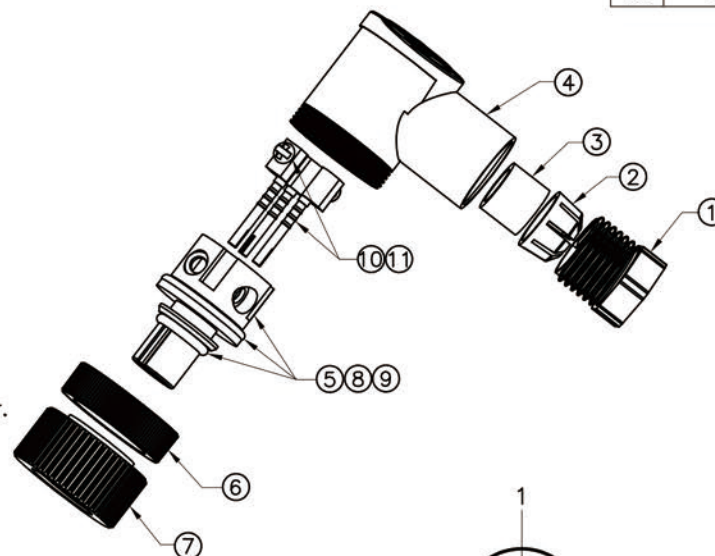
Rating current : 4A



Contact resistance of connector ≤10mΩ

Mechanical characteristics: mating / cycle >100 cycle

Operating temperature: -25°C ~ +85°

*ALL MATERIALS ARE RoHS COMPLIANT.



 SIGNAL®		TITLE M12 ASSEMBLY FEMALE ANGEL CONNECTOR PG7			
Shenzhen Signal Electronics Co., LTD		SGN NO 120103-02-003	REV.		
DRAWN BY	DATE	DWG NO	S0		
CHECKED BY	DATE	CUSTOMER			
APPROVED BY	DATE	TOLERANCES ARE:			
THE INFORMATION CONTAINED IN THIS DRAWING IS THE SOLE PROPERTY OF SIGNAL COMPANY. ANY REPRODUCTION IN PART OR WHOLE WITHOUT THE WRITTEN PERMISSION OF SIGNAL COMPANY IS PROHIBITED.		DECIMALES	ANGLES	THIRD ANGLE PROJECTION	
		.x ±0.5	x' ±2.0'	SIZE: A4	
		.xx ±0.20	x' ±1.0'	UNITS: mm	
				SCALE:	SHEET: 1 OF